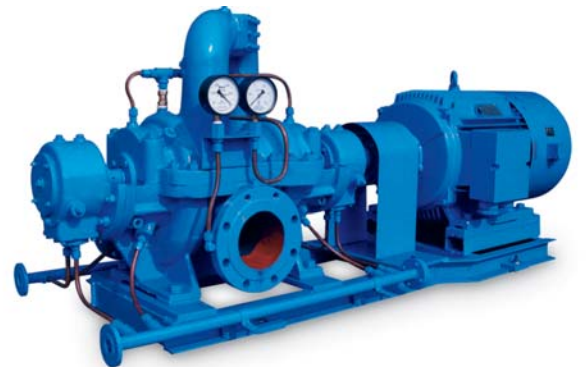


NW系列低加疏水泵

NW SERIES LOW PRESSURE HEATER DRAINAGE PUMP



目录 CONTENTS

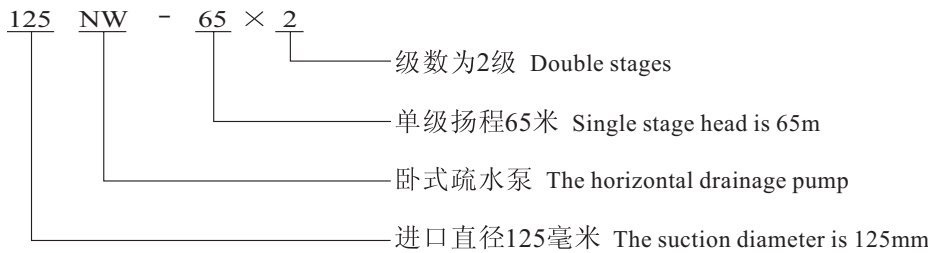
概述	01
General description	
型号意义	01
The significance of the type	
结构说明	01
About the structure	
结构图	02
Sectional drawing	
工作性能表	03
Performance table	
性能曲线图	03
Performance curve	
外形图	04
Overall dimension	

概述 GENERAL DESCRIPTION

NW型低加疏水泵，用于12.5万千瓦~30万千瓦电厂输送低压加热器疏水，介质温度除150NW-90×2型号≤130℃，其余型号都为≤120℃。该系列泵汽蚀性能好，适用于低NPSH工况的工作条件。

NW type drainage pump for low pressure heater is used for conveying the water in low pressure heater for power station. The temperature of liquid conveyed is not over 120℃ except 150NW-90×2 type pump, for which the temperature is not over 130℃. This kind of pump is of good NPSH performance. It is suitable for the condition of lower NPSH.

型号意义 THE SIGNIFICANCE OF THE TYPE



结构说明 ABOUT THE STRUCTURE

NW型低加疏水泵主要由定子、转子、滚动轴承和轴封四大部分组成：

- 1、定子部分** 主要由泵体、泵盖等组成，用螺栓联接，构成工作室。进出水口法兰均为水平方向。
- 2、转子部分** 主要由轴、叶轮、诱导轮和轴套等组成。轴将动力传递给叶轮使其工作；轴的两端装有可更换的轴套用来保护轴。
- 3、滚动轴承** 主要由轴承体、轴承和轴承压盖等组成，采用油润滑。
- 4、轴封分填料密封和机械密封**

填料密封 主要由填料压盖、填料、填料套和填料环组成。密封工作室内的液体起水封、水冷和水润滑作用。水封水来源于泵内压力水。

机械密封 主要由机械密封、机械密封压盖组成。机械密封冲洗液体来源于泵内压力水。

另外，泵通过弹性器由原动机直接驱动。从原动机轴端看泵，泵分有顺时针方向旋转和逆时针方向旋转。

This pump consists of stator, rotor, rolling bearing and shaft seal.

- 1. Stator:** consists of pump casing and casing cover etc., jointed with bolts to form the working room. Flanges on both inlet and outlet are horizontally directed.
- 2. Rotor:** consists of shaft, impeller, inducer and shaft sleeve etc., the shaft transmits the power to the impeller to have it work: on both ends of the shaft there are mounted replaceable shaft sleeve for protecting it.
- 3. Rolling bearing:** consists of bearing body, bearing, bearing gland etc. and uses lubricating oil.
- 4. Shaft seal: packing seal and mechanical seal**

Packing seal: consists of packing gland, packing, packing sleeve, packing etc., the liquid inside of the sealing-work room acts as water sealing, cooling and lubricating. The water for water sealing comes from the pressured water inside of the pump.

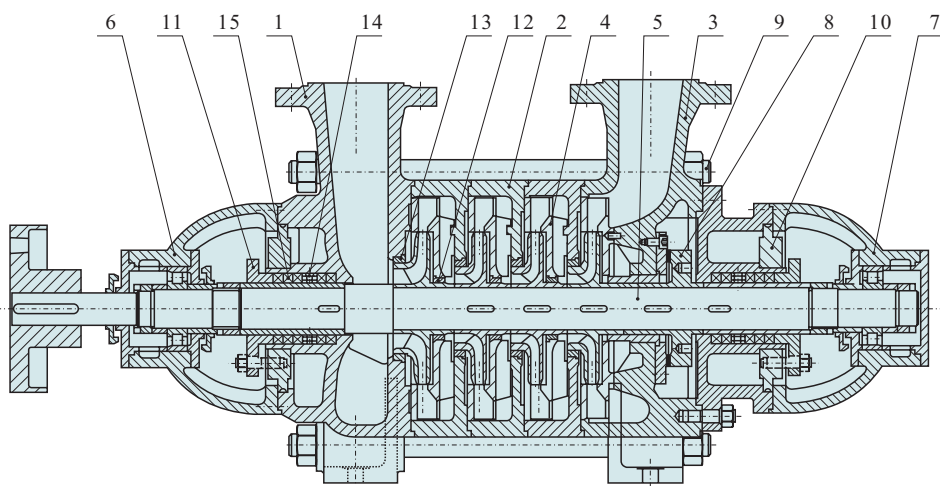
Mechanical seal: consists of mechanical seal, mechanical seal gland etc., the rinsing liquid for the mechanical seal comes from the pressured water inside of the pump.

Besides, the pump is actuated directly by the prime mover via an elastic device. The pump can move either CW or CCW viewing from the prime mover.

结构图 SECTIONAL DRAWING

80NW-43×4型低加疏水泵结构图

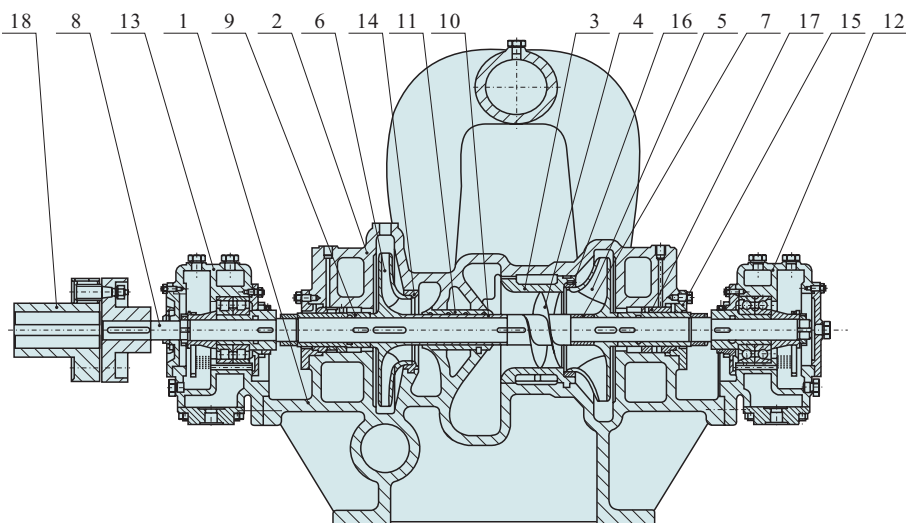
Section Drawing for 80NW-43×4 Type Drainage Pump for Low Pressure Heater



1	进 水 段 Inlet section
2	中 段 Middle section
3	出 水 段 End section
4	导 叶 Guide vane
5	转子部件 Rotor
6	轴承甲部件 Bearing A
7	轴承乙部件 Bearing B
8	平 衡 盘 Balance disc
9	穿 杠 Plate bolt
10	填料函冷却盖 Stuffing cooling Cover
11	填料压盖 Stuffing gland
12	导叶衬套 Guide vane sleeve
13	密 封 环 Seal ring
14	填 料 环 Stuffing ring
15	填 料 Stuffing

NW型低加疏水泵结构图

Section Drawing for NW Type Drainage Pump for Low Pressure Heater

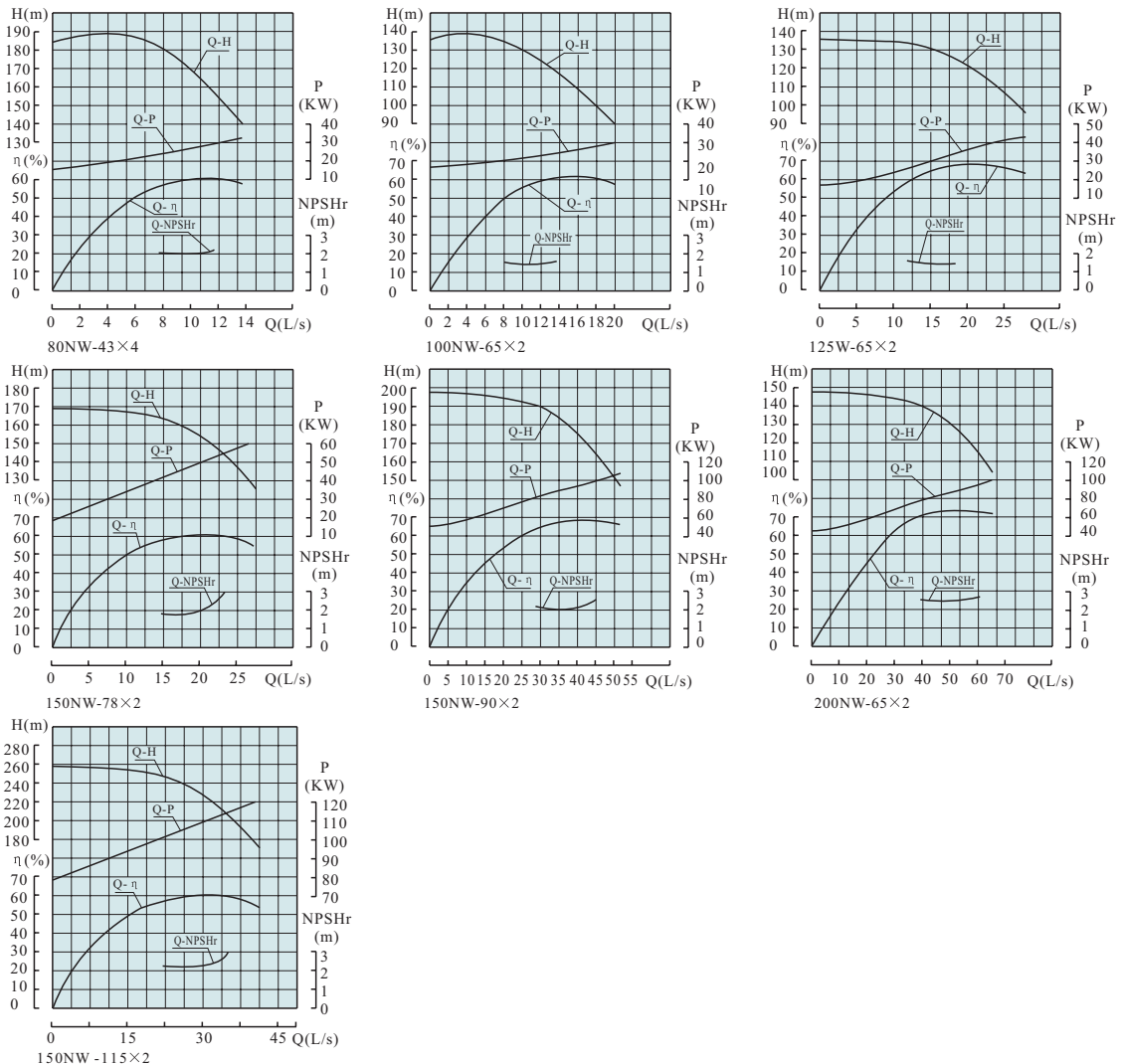


1	泵 体 Pump casing
2	泵 盖 Casing cover
3	诱导轮室衬套 Sleeve
4	诱 导 轮 Inducer
5	第一级叶轮 First stage Impeller
6	第二级叶轮 Second stage impeller
7	叶轮挡套 Impeller bush
8	轴 Shaft
9	轴套 Shaft sleeve
10	中间轴套 Middle section sleeve
11	级间密封套 Interstage seal sleeve
12	右轴承部件 Right bearing
13	左轴承部件 Left bearing
14	双吸密封环 Double suction seal ring
15	机械密封压盖 Mechanical seal gland
16	密 封 环 Seal ring
17	机械密封 Mechanical seal
18	弹性联轴套部件 Flexible coupling

工作性能表 PERFORMANCE TABLE

型号 Type	流量 Capacity Q		扬程 Head (米) (m)	转速 Speed n (转/分) (r/min)	功率(千瓦) Power(kw)		效率 Eff η %	允许汽蚀 余量 NPSHr (米) (m)	重量 泵/底座 Weight Pump/stool (公斤) (kg)
	米 ³ /时 m ³ /h	升/分 L/s			轴功率 (Shaft)	电动机 (Motor)			
80NW-43×4	28.5	7.9	182	2950	25	Y200L2-2 37	56.5	2	287/100
	36	10	170		27.8		60		
	43	11.9	156		29.94		61		
100NW-65×2	28	7.8	134	2930	21.3	Y200L1-2 30	49	1.6	300/132
	36	10	130		23.2		55		
	43	11.9	124		24.5		59		
125NW-65×2	43	11.9	133	2930	27	Y200L2-2 37	58.5	1.6	333/138
	57	15.8	130		31		65		
	67	18.6	125		34		67		
150NW-78×2	54	15	163	2970	41.3	Y250M-2 55	58	1.9	430/160
	69	19.2	156		48.1		61		
	82.8	23	145		54		60.5		
150NW-90×2	104	28.9	190	2980	85	Y315S-2 110	63.3	2.2	436/211
	134	37.2	180		96.5		68		
	161	44.7	166		105.7		68.8		
150NW-115×2	105	29.2	230	2980	109.6	Y315M-2 132	60	2.3	531
200NW-65×2	182	50.6	130	2950	86.6	Y315S-2 110	74.5	2.5	550

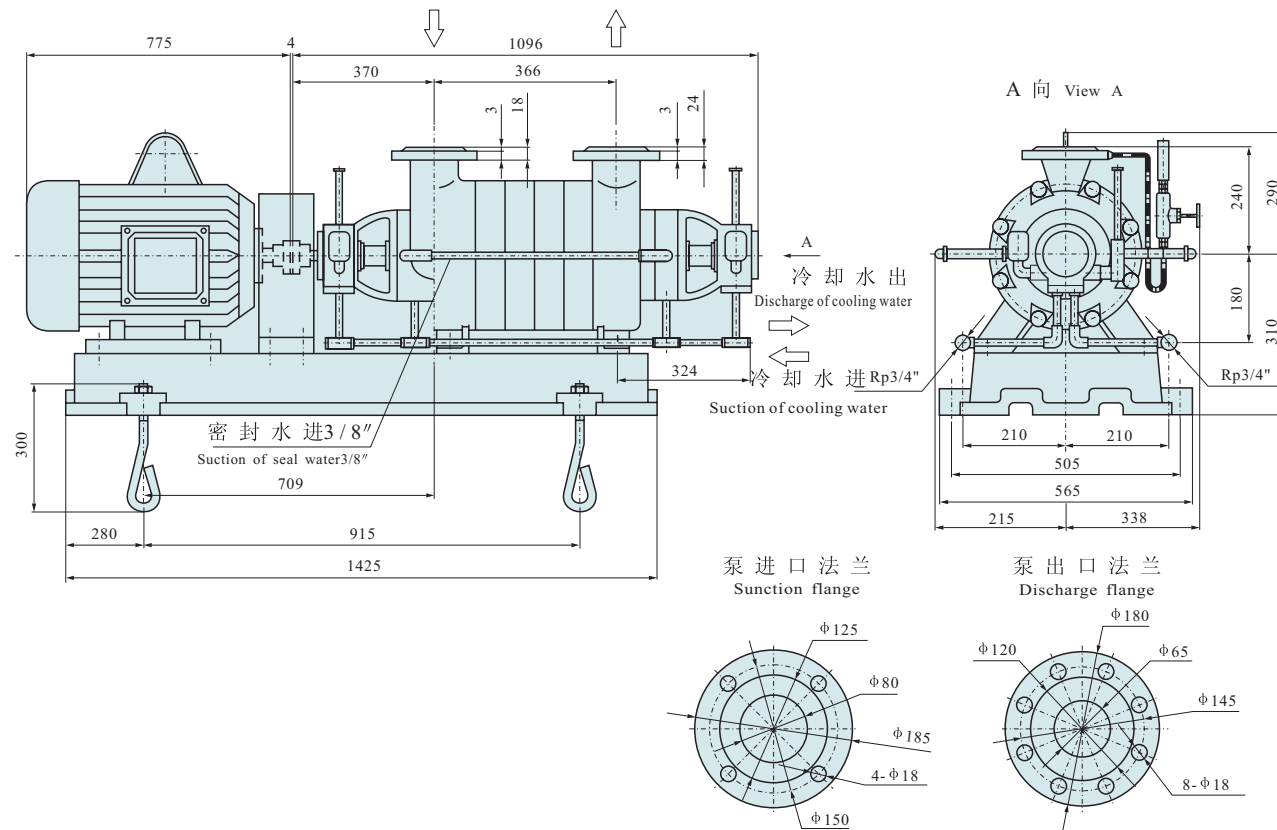
性能曲线图 PERFORMANCE CURVE



外形图 OVERALL DIMENSION

80NW-43×4型低加疏水泵外形图

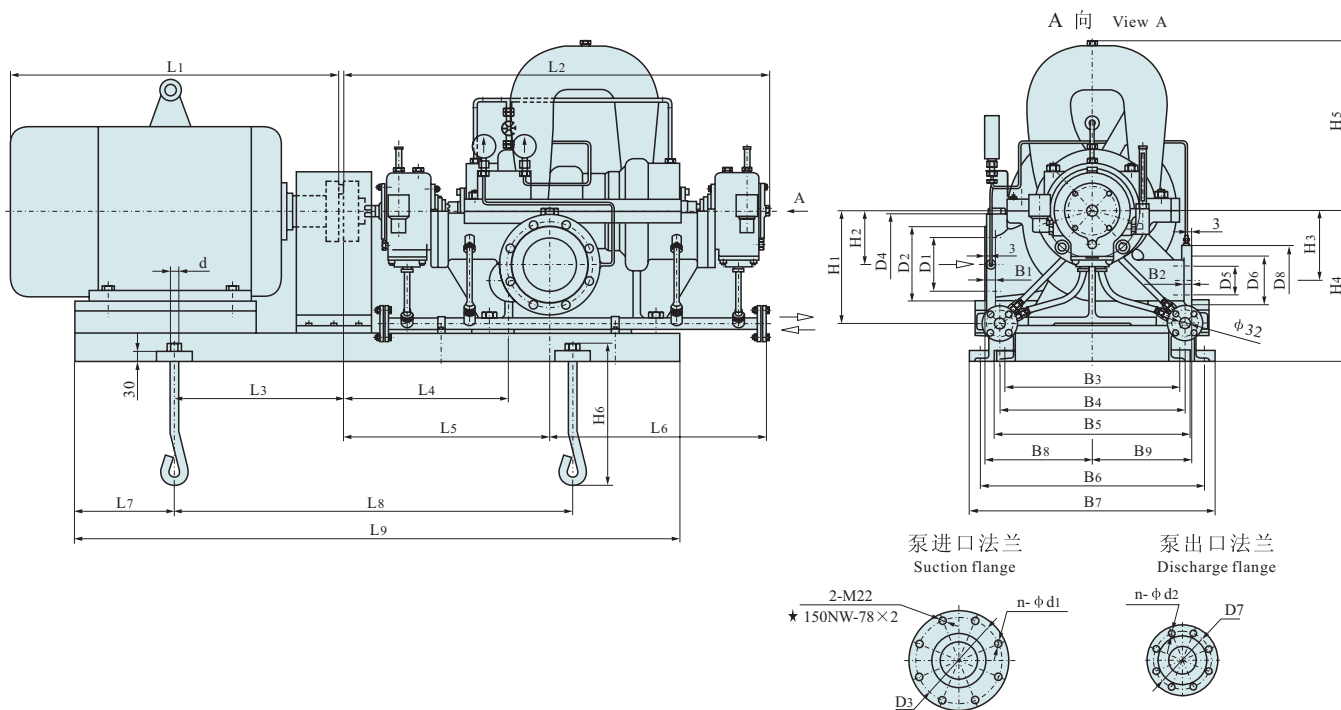
Overall Dimension for 80NW-43×4 Type Drainage Pump for Low Pressure Heater



外形图 OVERALL DIMENSION

NW型低加疏水泵外形图

Overall Dimension for NW Type Drainage Pump for Low Pressure Heater



泵型号 Type	泵安装尺寸 Dimension																								
	L1	L2	L3	L4	L5	L6	L7	L8	L9	B1	B2	B3	B4	B5	B6	B7	B8	B9	H1	H2	H3	H4	H5	H6	d
100NW-65×2	775	1056.5	300.5	447	591	469.5	325	870	1402.5	24	20	415	460	475	516	576	270	270	265	120	165.5	375	387	300	M20
125NW-65×2	775	1143.5	298.5	432.5	548	543	330	940	1453.5	26	22	410	460	470	520	580	300	300	305	137.5	184	410	434.5	300	M20
150NW-78×2	930	1200	475	465	580	610	280	1120	1700	28	22	490	620	550	630	690	300	280	314	150	195	420	475	400	M24
150NW-90×2	1240	1288	665	492	622	670	420	1285	2115	32	30	530	570	600	875	945	330	355	420	155	224.5	510	478.5	400	M24
150NW-115×2	1310	1288	665	492	622	670	420	1285	2115	32	30	530	570	600	875	945	330	355	430	155	237	520	478.5	400	M24

泵型号 Type	进口法兰尺寸 Suction flange					出口法兰尺寸 Discharge flange				
	D1	D2	D3	D4	n-φd1	D5	D6	D7	D8	n-φd2
100NW-65×2	100	155	180	215	8-φ18	65	120	145	180	4-φ18
125NW-65×2	125	185	210	245	8-φ18	80	135	160	195	8-φ18
150NW-78×2	150	210	240	280	8-φ23	80	135	160	195	8-φ18
150NW-90×2	150	218	250	300	8-φ25	100	160	190	230	8-φ23
150NW-115×2	150	218	250	300	8-φ25	100	160	190	230	8-φ23

注: 200NW-65×2外形尺寸, 若需请向我们索取!
Note: 200NW-65×2 figure dimension, please come down on us.

由于我们在不断努力改进产品，我们保留样本数据更改的权利，敬请谅解。

As we are constantly endeavouring to improve the performance of our equipment.

The company reserves the right to make alteration from time to time and equipment differ from that detailed in this brochure.

上海连成(集团)有限公司
SHANGHAI LIANCHENG (GROUP) CO.,LTD.
上海连成泵业制造有限公司
SHANGHAI LIANCHENG PUMP-MANUFACTURE CO.,LTD.

地址：上海市江桥曹安公路3616-3618号

邮编：201812

总机：(021)59138888

传真：(021)59136782

800免费咨询电话：800-820-5009

Address:3616-3618 Cao'an Road, Jiangqiao Shanghai

P.C.: 201812

Switchboard: (021) 59138888

Fax: (021) 59136782

800 Free consultation Tel:800-820-5009

www.lcpumps.com

webmaster@lcpumps.com

□ 印刷日期：20th.Mar.2006

版权所有 翻印必究 All rights reserved.Pirate is forbidden.